

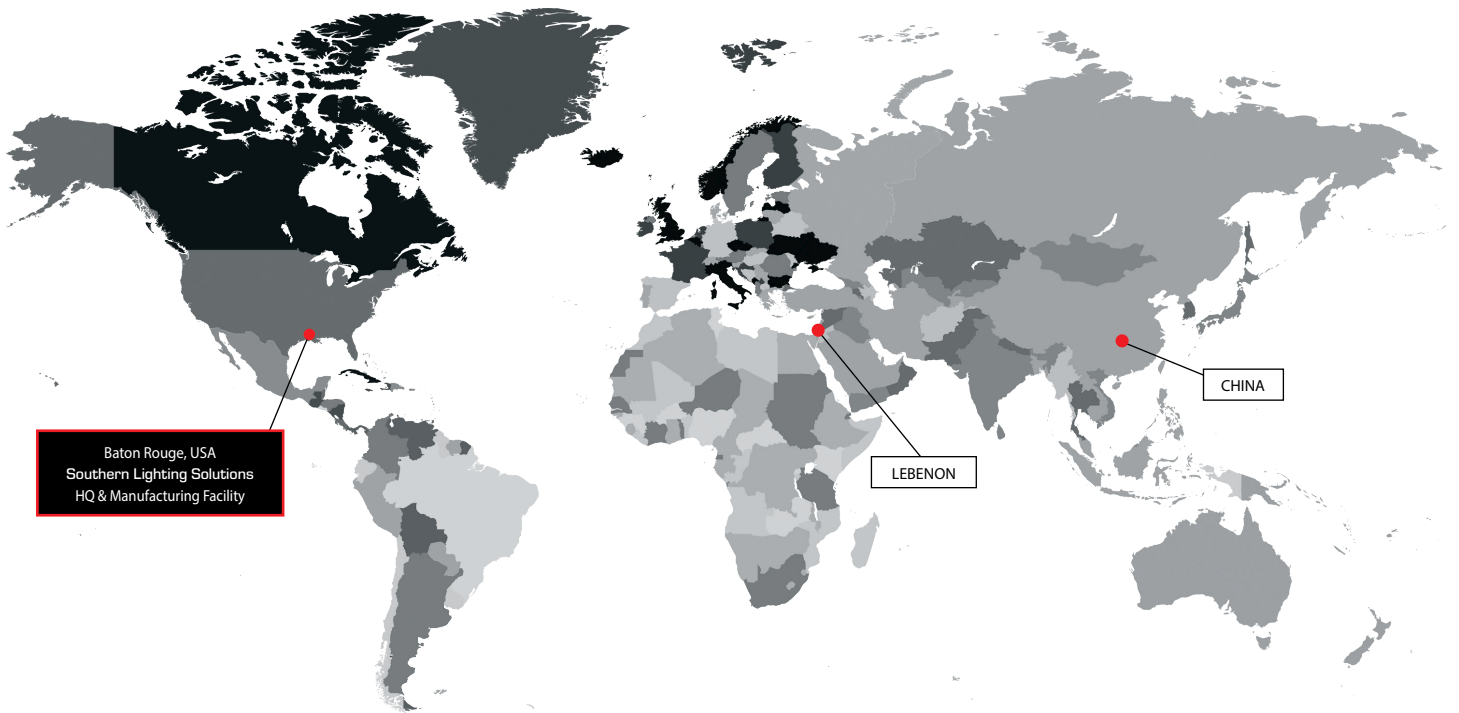
2020 - 2021

commercial catalogue





HQ and Manufacturing Facility // Baton Rouge, USA



### WHY LED?

LED's generate less heat, are more durable, and also require less electricity. LED users can expect an immediate drop in their electricity bill - in residential or commercial instances.

### AMPLIFY YOUR SAVINGS

Customers who replace their fixtures with LED specialty will see an even larger drop in electric expense.

### WHY SLS?

We could talk about experience, efficiency, customer service, and the ability to innovate to customer needs.

The main motivation? Quality. SLS aims to provide the best, certified quality to our customers with outstanding warranties.



## Ceiling Recessed



Dawn - Base  
Page 8

∅75/∅100/∅150  
∅3"/∅4"/∅6"

700 - 3300 Lm

Dimmable : IP20/54

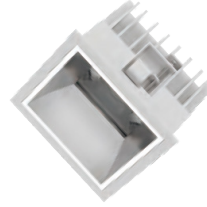


Dawn - Reflective  
Page 8

∅100/∅150  
∅4"/∅6"

1300 - 2200 Lm

Dimmable : IP20/54



Dawn - Square  
Page 8

100x100/150x150/200x200  
4"x4"/6"x6"/8"x8"

900 - 3200 Lm

Dimmable : IP44



Dawn - ECHO  
Page 9

∅200 : ∅8"

2800 - 5600 Lm

Dimmable : IP20/54

## Surface Mounted



Icon

Page 7

(fixed/adjustable)

93x93x93  
3.7"x3.7"x3.7"

GU10 : 600 - 1200 Lm

Dimmable : IP20/54

## Tape Light



Trim Reg - 1  
Page 12 Single

5000x10 : 196.85"x0.39"

500 - 3000 Lm

IP22/65/67/68



Trim Reg - 2  
Page 13 Double

5000x14 : 196.85"x0.55"

1600 - 3000 Lm

IP22/65/67/68



Trim Reg - 3  
Page 14

FN-H2835-288-24

5000x22 : 196.85"x0.87"

3200 - 3700 Lm

IP22/54/65



Trim Reg - 4  
Page 15

FN-H2835-416-24

5000x28 : 196.85"x1.10"

4300 - 5500 Lm

IP22/54/65

## Panels



Shine Page 11

600x600/600x1200  
2'x2'/2'x4'

3000 - 7200 Lm

Dimmable : IP44



Glow Page 10

600x600/600x1200  
2'x2'/2'x4'

3000 - 7200 Lm

Dimmable : IP44



Mood by order

600x600/600x1200  
2'x2'/2'x4'

3000 - 6250 Lm

Dimmable : IP44

## Industrial & Outdoor



Brite Tite Page 20

1200 : 4'

4400 - 9000 Lm

Fixed : IP65



Brill by order

1200 : 4'

4000 - 5200 Lm

Fixed : IP44



Monument Page 19

1200 : 4'

4400 - 9000 Lm

Fixed : IP65/66/67/69k



Titan I + 2 Page 17 & 18

Ø350  
Ø14"

4000 - 12000 Lm

IP66



Gladiator Page 23

Ø350  
Ø14"

4000 - 12000 Lm

IP66



Blaze Page 21

Ø350  
Ø14"

4000 - 12000 Lm

IP66

**OTHER SIZES AVAILABLE • OTHER STYLES AVAILABLE • OTHER PRODUCTS AVAILABLE**

**E-MAIL: [info@southernlightinginc.com](mailto:info@southernlightinginc.com)**

---

INTERIOR  
LIGHTING

---

Icon  
 (fixed/adjustable)  
 93x93x93  
 3.7"x3.7"x3.7"



## Luminaire Specifications

Luminaire Type	Ceiling Recessed downlight
Adjustability	adjustable, 355 / 25-0; fixed
Housing material	Die-cast aluminium
Trim/Bezel - Finish	RAL 9010 White Specify RAL colour for other finish
Heat Sink material	Aluminium
Reflector Finish	Specular, Matt
Ingress Protection (*IP Rating)	IP 20, IP 54
Beam Angle*	Spot, Medium, Flood, Wide Flood
Power Factor	> 0.9 (if integrated)
Luminaire Life Time	≥ 50,000 hrs
Life Time Basis	L70/B10 @ Ta °25c
Accessories	Diffuse Lens, honey comb Louver (Luminaire suitable to accomodate louver along with lens) & over size cutout hole adapter
Warranty	5 Years
Product Applications Areas	Hospitality, Retail, Healthcare, Luxury Homes

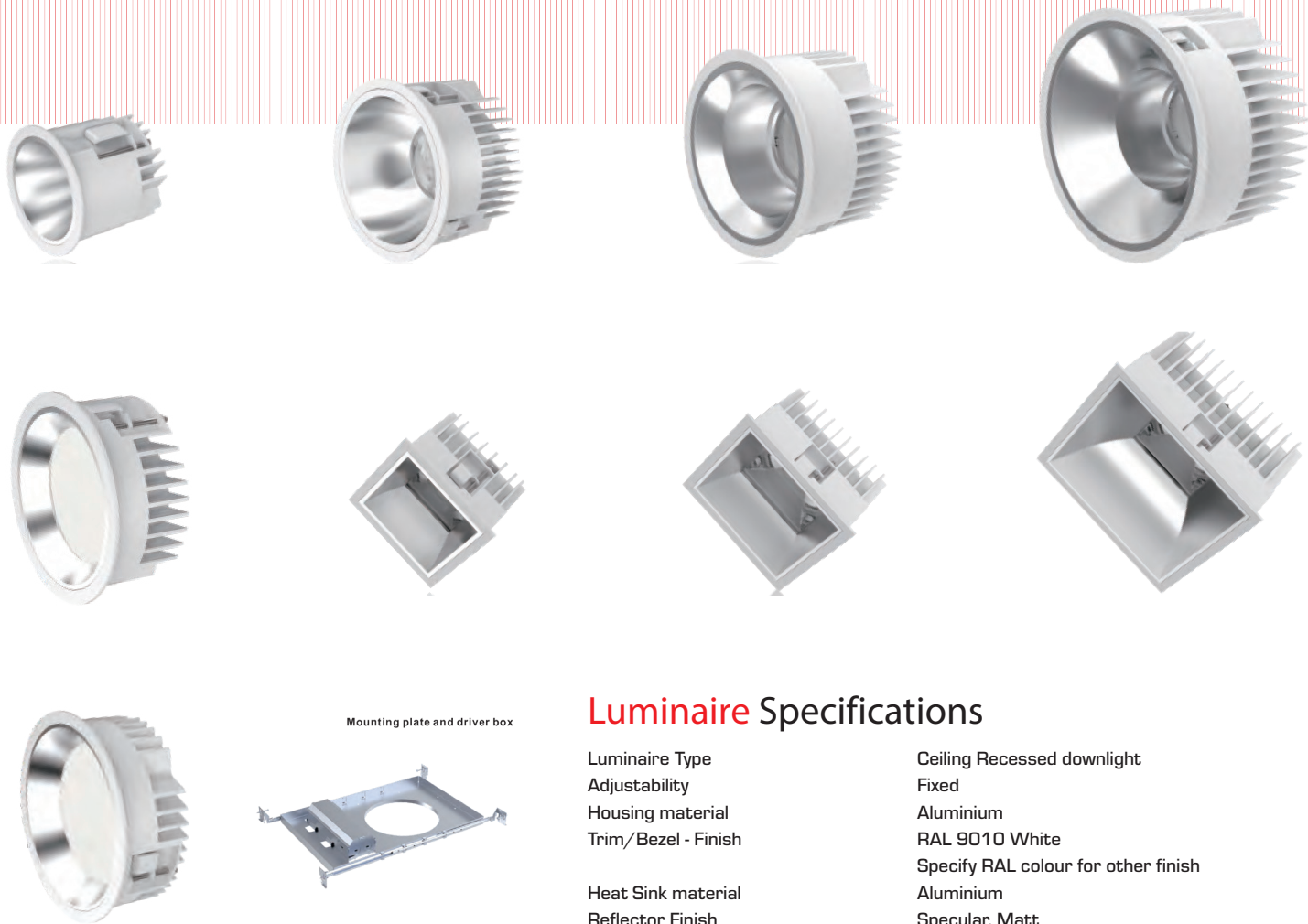
## Light Source Specifications

Light Source	LED
LED Color Variation	≤2SDCM and ≤3SDCM
Colour Temperature (CCT)	2700k, 3000k, 4000k
Colour Rendering Index (CRI)	CRI 90 (CRI 95+ options available)
Luminous Flux**	GU10 / 600 lm - 1200 lm (X2)

**ICON**  
 Designer, surface mounted

# DAWN

Customizable recessed light



Mounting plate and driver box

## Luminaire Specifications

Luminaire Type	Ceiling Recessed downlight
Adjustability	Fixed
Housing material	Aluminium
Trim/Bezel - Finish	RAL 9010 White
	Specify RAL colour for other finish
Heat Sink material	Aluminium
Reflector Finish	Specular, Matt
Ingress Protection (*IP Rating)	IP 20, IP 54
Beam Angle*	Wide
Power Factor	> 0.9
Luminaire Life Time	≥ 50,000 hrs
Life Time Basis	L70/B10 @ Ta °25c
Accessories	Mounting plate and driver box
Warranty	5 Years
Product Applications Areas	Hospitality, Retail, Healthcare, Transportation, Luxury Homes

## Light Source Specifications

Light Source	LED
LED Color Variation	≤ 2SDCM and ≤ 3SDCM options available
Colour Temperature (CCT)	2700k, 3000k, 4000k
Colour Rendering Index (CRI)	CRI 80, CRI 90 and CRI 95 options available
Luminous Flux**	700 lm - 5600 lm



Dawn - ECHO  
ø200 : ø8"



# DAWN-ECHO

Customizable recessed light

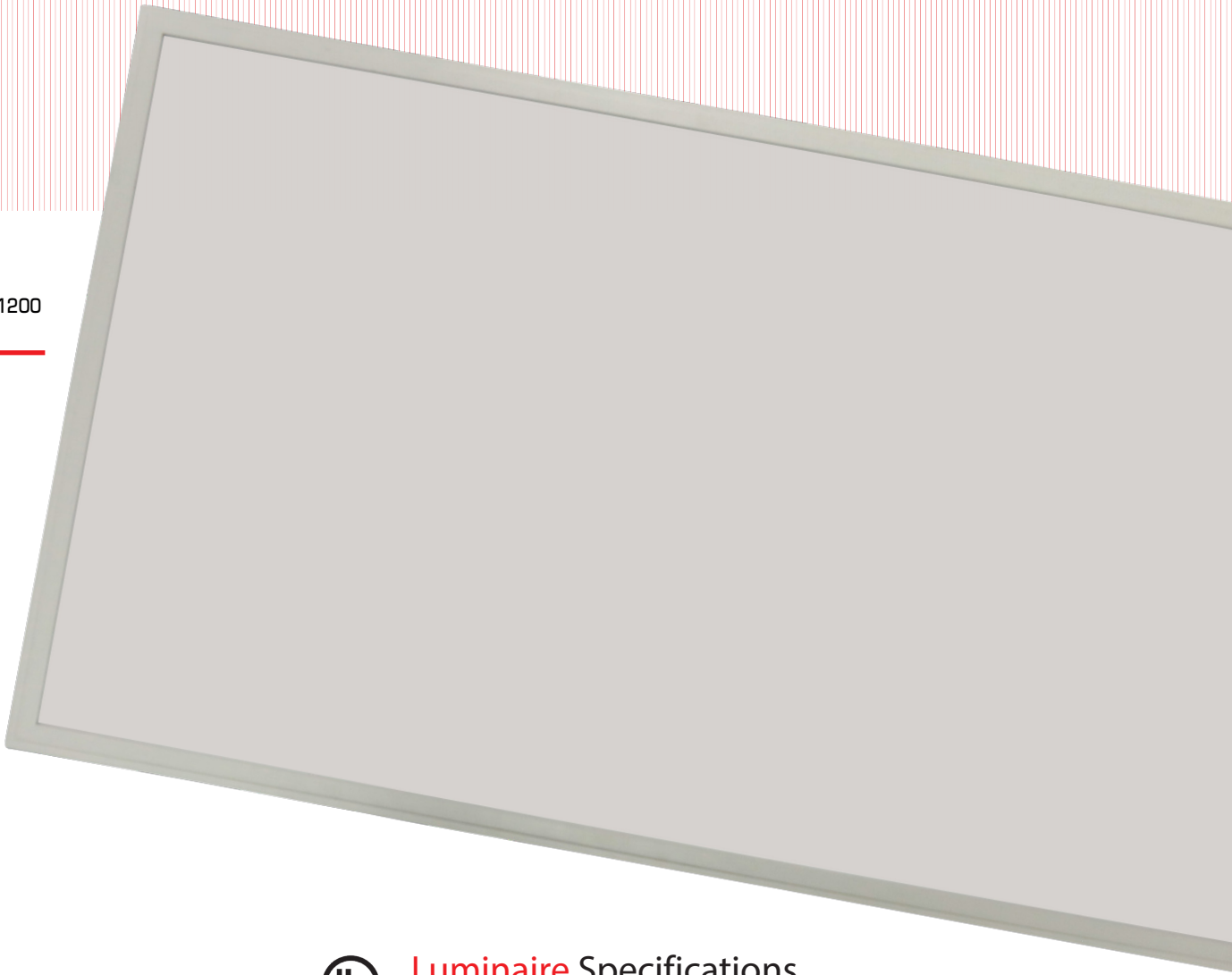
## Luminaire Specifications

Luminaire Type	Ceiling Recessed downlight
Adjustability	Fixed
Housing material	Aluminium
Trim/Bezel - Finish	RAL 9010 White
Heat Sink material	Aluminium
Reflector Finish	PMMA
Ingress Protection (*IP Rating)	IP 44
Beam Angle*	Wide
Power Factor	> 0.9
Luminaire Life Time	≥ 50,000 hrs
Life Time Basis	L70/B10 @ Ta °25c
Accessories	Mounting kit
Warranty	5 Years
Product Applications Areas	Hospitality, Retail, Healthcare, Transportation, Homes

## Light Source Specifications

Light Source	LED
LED Color Variation	≤ 4SDCM
Colour Temperature (CCT)	2700k, 3000k, 4000k, 5000k
Colour Rendering Index (CRI)	CRI 80
Luminous Flux* *	1000 lm

Glow  
600x600/600x1200  
2'x2'/2'x4'



# GLOW

Panel light



## Luminaire Specifications

Luminaire Type	Recessed flat panel
Adjustability	Fixed
Housing material	Aluminium
Trim/Bezel - Finish	RAL 9010 White Specify RAL colour for other finish
Heat Sink material	Aluminium
Lens	Acrylic, PMMA
Ingress Protection (*IP Rating)	IP 44
Beam Angle*	Wide
Power Factor	> 0.9
Luminaire Life Time	≥ 50,000 hrs
Life Time Basis	L70/B10 @ Ta °25c
Accessories	Suspension kit, surface mounting kit
Warranty	5 Years
Product Applications Areas	Hospitality, Retail, Healthcare, Transportation, Office

## Light Source Specifications

Light Source	LED
LED Color Variation	≤ 2SDCM and ≤ 3SDCM options available
Colour Temperature (CCT)	4000k (3000k & 5000k by order)
Colour Rendering Index (CRI)	CRI 80, CRI 90 and CRI 95 (options available)
Luminous Flux* *	3600 lm 2X2; 4400 2X4 (up to 7000 lm by order)

Shine  
600x600/600x1200  
2'x2'/2'x4'



## Luminaire Specifications

Luminaire Type	Recessed back lit flat panel
Adjustability	Fixed
Housing material	Aluminium
Trim/Bezel - Finish	RAL 9010 White Specify RAL colour for other finish
Heat Sink material	Aluminium
Lens	Acrylic, PMMA
Ingress Protection (*IP Rating)	IP 44
Beam Angle*	Wide
Power Factor	> 0.9
Luminaire Life Time	≥ 50,000 hrs
Life Time Basis	L70/B10 @ Ta °25c
Accessories	Surface mounting kit
Warranty	5 Years
Product Applications Areas	Hospitality, Retail, Healthcare, Transportation, Office

## Light Source Specifications

Light Source	LED
LED Color Variation	≤ 2SDCM and ≤ 3SDCM options available
Colour Temperature (CCT)	4000k (3000k & 5000k by order)
Colour Rendering Index (CRI)	CRI 80, CRI 90 and CRI 95 (options available)
Luminous Flux**	3600 lm 2X2; 4400 2X4 (up to 10000 by order)

**SHINE**  
Panel light

Trim Reg - 1  
Single

5000x10 : 196.85"x0.39"



## Luminaire Specifications

Luminaire Type	Strip 12V / 24V
Adjustability	Fold
Housing material	Silicon or crystal resin
Ingress Protection (*IP Rating)	IP 22, 54, 65, 67, 68 (68 for single and double avail)
Power Factor	W/D
Luminaire Life Time	≥ 50,000 hrs
Life Time Basis	L70/B10 @ Ta °25c
Accessories	Connections, profiles
Warranty	3 & 5 Years
Product Applications Areas	Hospitality, Retail, Healthcare, Transportation, Luxury Homes
Dimensions	(Top Left)

## Light Source Specifications

Light Source	LED
LED Color Variation	≤ 2SDCM and ≤ 3SDCM options available
Colour Temperature (CCT)	2700k, 3000k, 4000k, 6000k, 8000k, RGB, RGBw
Colour Rendering Index (CRI)	CRI 90 (CRI 95 options available), CR 180
Luminous Flux* *	600 lm - 3000 lm

**TRIM-1**  
Strip light

Trim Reg - 2  
Double

5000x14 : 196.85"x0.55"



## Luminaire Specifications

Luminaire Type	Strip 12V / 24V
Adjustability	Fold
Housing material	Silicon or crystal resin
Ingress Protection (*IP Rating)	IP 22, 54, 65, 67, 68 (68 for single and double avail)
Power Factor	W/D
Luminaire Life Time	≥ 50,000 hrs
Life Time Basis	L70/B10 @ Ta °25c
Accessories	Connections, profiles
Warranty	3 & 5 Years
Product Applications Areas	Hospitality, Retail, Healthcare, Transportation, Luxury Homes
Dimensions	(Top Left)

## Light Source Specifications

Light Source	LED
LED Color Variation	≤ 2SDCM and ≤ 3SDCM options available
Colour Temperature (CCT)	2700k, 3000k, 4000k, 6000k, 8000k, RGB,
RGBw	
Colour Rendering Index (CRI)	CRI 90 (CRI 95 options available), CR 180
Luminous Flux**	2000 lm - 3000 lm

**TRIM-2**  
Strip light



Trim Reg - 3

Triple

5000x22 : 196.85"x0.87"



## Luminaire Specifications

Luminaire Type	Strip 12V / 24V
Adjustability	Fold
Housing material	Silicon or crystal resin
Ingress Protection (*IP Rating)	IP 22, 54, 65, 67, 68 (68 for single and double avail)
Power Factor	W/D
Luminaire Life Time	≥50,000 hrs
Life Time Basis	L70/B10 @ Ta °25c
Accessories	Connections, profiles
Warranty	3 & 5 Years
Product Applications Areas	Hospitality, Retail, Healthcare, Transportation, Luxury Homes
Dimensions	(Top Left)

## Light Source Specifications

Light Source	LED
LED Color Variation	≤2SDCM and ≤3SDCM options available
Colour Temperature (CCT)	2700k, 3000k, 4000k, 6000k, 8000k, RGB,
RGBw	
Colour Rendering Index (CRI)	CRI 90 (CRI 95 options available), CR 180
Luminous Flux**	1680 lm - 3600 lm

**TRIM-3**  
Strip light

Trim Reg - 4  
Quadruple

5000x28 : 196.85"x1.10"



## Luminaire Specifications

Luminaire Type	Strip 12V / 24V
Adjustability	Fold
Housing material	Silicon or crystal resin
Ingress Protection (*IP Rating)	IP 22, 54, 65, 67, 68 (68 for single and double avail)
Power Factor	W/D
Luminaire Life Time	≥50,000 hrs
Life Time Basis	L70/B10 @ Ta °25c
Accessories	Connections, profiles
Warranty	3 & 5 Years
Product Applications Areas	Hospitality, Retail, Healthcare, Transportation, Luxury Homes
Dimensions	(Top Left)

## Light Source Specifications

Light Source	LED
LED Color Variation	≤2SDCM and ≤3SDCM options available
Colour Temperature (CCT)	2700k, 3000k, 4000k, 6000k, 8000k,
RGB, RGBw	
Colour Rendering Index (CRI)	CRI 90 (CRI 95 options available), CR 180
Luminous Flux**	4300 lm - 5500 lm

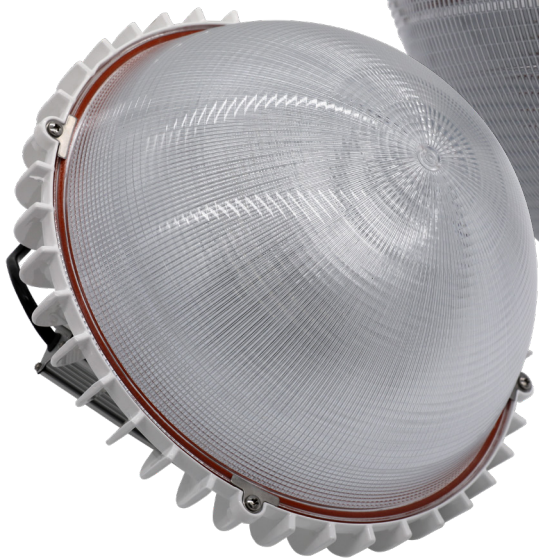
**TRIM-4**  
Strip light

---

INDUSTRIAL  
LIGHTING

---

Titan-1  
ø350  
ø14"



Made in  
USA



## Luminaire Specifications

Luminaire Type	Low bay
Adjustability	Fixed
Housing material	Die cast aluminium
Trim/Bezel - Finish	RAL 9010 White Specify RAL colour for other finish
Heat Sink material	Die cast aluminium
Reflector Finish	Acrylic, PMMA
Ingress Protection [*IP Rating]	IP 66
Beam Angle*	Wide
Power Factor	> 0.9
Luminaire Life Time	≥ 50,000 hrs
Life Time Basis	L70/B10 @ Ta °25c
Accessories	Diffuse Lens, honey comb Louver (Luminaire suitable to accomodate louver along with lens) & over size cutout hole adapter
Warranty	5 Years
Product Applications Areas	Industrial

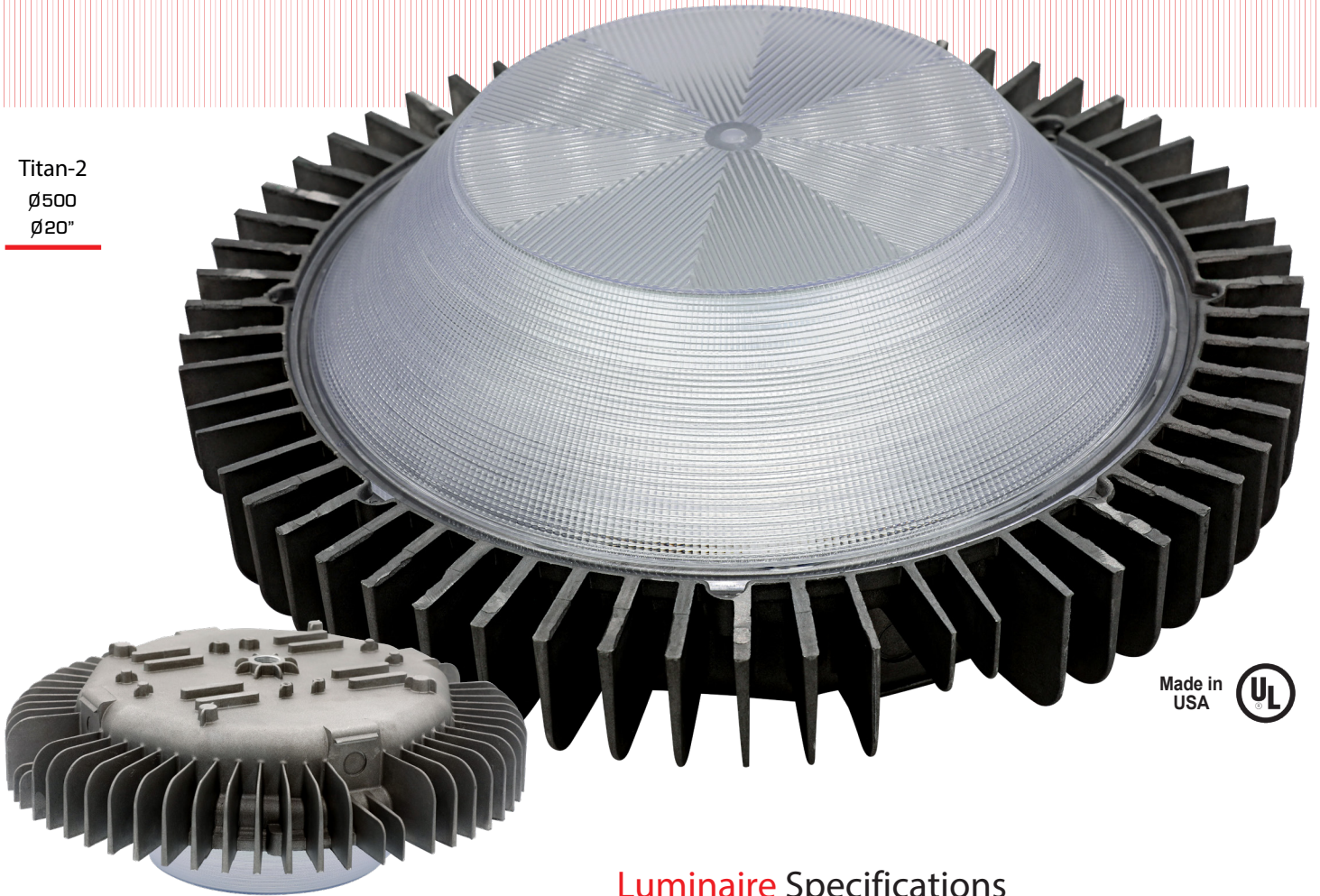
## Light Source Specifications

Light Source	LED
LED Color Variation	≤ 2SDCM and ≤ 3SDCM options available
Colour Temperature (CCT)	4000k (other options available)
Colour Rendering Index (CRI)	CRI 80, CRI 90 and CRI 95 options available
Luminous Flux**	4000 lm (up to 12,000)

**TITAN-1**  
Low bay (medium and small)



Titan-2  
ø500  
ø20"



Made in  
USA



# TITAN-2

High bay (large)

## Luminaire Specifications

Luminaire Type	Industrial high bay
Adjustability	Fixed
Housing material	Die cast aluminum
Trim/Bezel - Finish	RAL 9010 White Specify RAL colour for other finish
Heat Sink material	Die cast aluminum
Reflector Finish	Acrylic, polycarbonate, lumieo, moon glow
Ingress Protection [*IP Rating]	IP 66
Beam Angle*	Flood, Wide Flood
Power Factor	> 0.9
Luminaire Life Time	≥ 50,000 hrs
Life Time Basis	L70/B10 @ Ta °25c
Accessories	Suspension kit
Product Applications Areas	Industrial

## Light Source Specifications

Light Source	LED
LED Color Variation	≤ 2SDCM and ≤ 3SDCM options available
Colour Temperature (CCT)	4000k
Colour Rendering Index (CRI)	CRI 80, CRI 90 and CRI 95 options available
Luminous Flux**	6800 lm (up to 15000 lm)



Monument  
1200 : 4'



Made in USA 

# MONUMENT

Vapor tight, linear

## Luminaire Specifications

Luminaire Type	Industrial batton
Adjustability	Fixed
Housing material	Poly-carbonate
Trim/Bezel - Finish	RAL 9010 White
Heat Sink material	Aluminum
Lens	PMMA, Angle, Lumen
Ingress Protection (*IP Rating)	IP 65, 66, 67, 69
Beam Angle*	Wide, Asymmetric
Power Factor	> 0.9
Luminaire Life Time	≥ 100,000 hrs
Life Time Basis	L80/B10 @ Ta °25c
Accessories	Surface mount kit, suspension kit
Warranty	5 Years
Product Applications Areas	Industrial, Garage

## Light Source Specifications

Light Source	LED
LED Color Variation	≤ 2SDCM and ≤ 3SDCM options available
Colour Temperature (CCT)	4000k (others by order only)
Colour Rendering Index (CRI)	CRI 80, CRI 90 and CRI 95 options available
Luminous Flux**	4400 lm (up to 9000 lm by order)

Brite Tite  
1200 : 4'



# BRITE-TITE

Vapor tight, linear

## Luminaire Specifications

Luminaire Type	Industrial batton
Adjustability	Fixed
Housing material	Poly-carbonate
Trim/Bezel - Finish	RAL 9010 White
Heat Sink material	Aluminum
Reflector Finish	PMMA
Ingress Protection (*IP Rating)	IP 65
Beam Angle*	Wide
Power Factor	> 0.9
Luminaire Life Time	≥ 50,000 hrs
Life Time Basis	L80/B10 @ Ta °25c
Accessories	Surface mount kit, suspension kit
Warranty	3 & 5 Years
Product Applications Areas	Industrial, garage

## Light Source Specifications

Light Source	LED
LED Color Variation	≤ 3SDCM options available
Colour Temperature (CCT)	4000k (others by order only)
Colour Rendering Index (CRI)	CRI 80, CRI 90 and CRI 95 options available
Luminous Flux* *	4400 lm (up to 9,000 by order)



# BLAZE

High bay spotlight

## Luminaire Specifications

Luminaire Type	High bay
Adjustability	Adjustable 240 degrees
Housing material	Aluminium
Trim/Bezel - Finish	Black
Heat Sink material	Aluminium
Lens	Focused optics
Ingress Protection [*IP Rating]	IP 65
Beam Angle*	120 degrees
Power Factor	> 0.95
Luminaire Life Time	≥ 50,000 hrs
Life Time Basis	L70/B10 @ Ta °25c
Accessories	Photo sensor, Post mount, Snoot, infrared sensor
Warranty	5 Years
Product Applications Areas	Ports, sports stadiums, industrial,

## Light Source Specifications

Light Source	LED
LED Color Variation	≤ 3SDCM options available
Colour Temperature (CCT)	4000k, 5000k
Colour Rendering Index (CRI)	CRI 80
Luminous Flux* *	13000 lm - 28000 lm (up to 65000 by order)

---

EXTERIOR  
LIGHTING

---

# GLADIATOR

175-degree arc spotlight



## Luminaire Specifications

Luminaire Type	Stadium flood light
Adjustability	Adjustable 240 degrees
Housing material	Aluminium
Trim/ Bezel - Finish	Black
Heat Sink material	Aluminium
Lens	Focused optics
Ingress Protection [*IP Rating]	IP 66
Beam Angle*	15, 20, 25, 30, 40, 45, 80 degrees
Power Factor	> 0.95
Luminaire Life Time	≥ 50,000 hrs
Life Time Basis	L70/B10 @ Ta °25c
Accessories	Photo sensor, Post mount, Snoot, infrared sensor
Warranty	5 Years
Product Applications Areas	Ports, sports stadiums, industrial, highways

## Light Source Specifications

Light Source	LED
LED Color Variation	≤ 3SDCM options available
Colour Temperature (CCT)	4000k, 8000k
Colour Rendering Index (CRI)	CRI 70
Luminous Flux* *	39000 lm - 162,800 lm





HEADQUARTERS:

688 Hatchell Lane, Denham Springs  
Louisiana, 70726. USA

web: [southernlightinginc.com](http://southernlightinginc.com)

+1 225 931 1012

email: [mchugh@southernlightinginc.com](mailto:mchugh@southernlightinginc.com)

